



ZARROW POINTE

*A Legacy of Tulsa Jewish*

## The Apartments



# Independent or Assisted Living Tailored to Your Needs

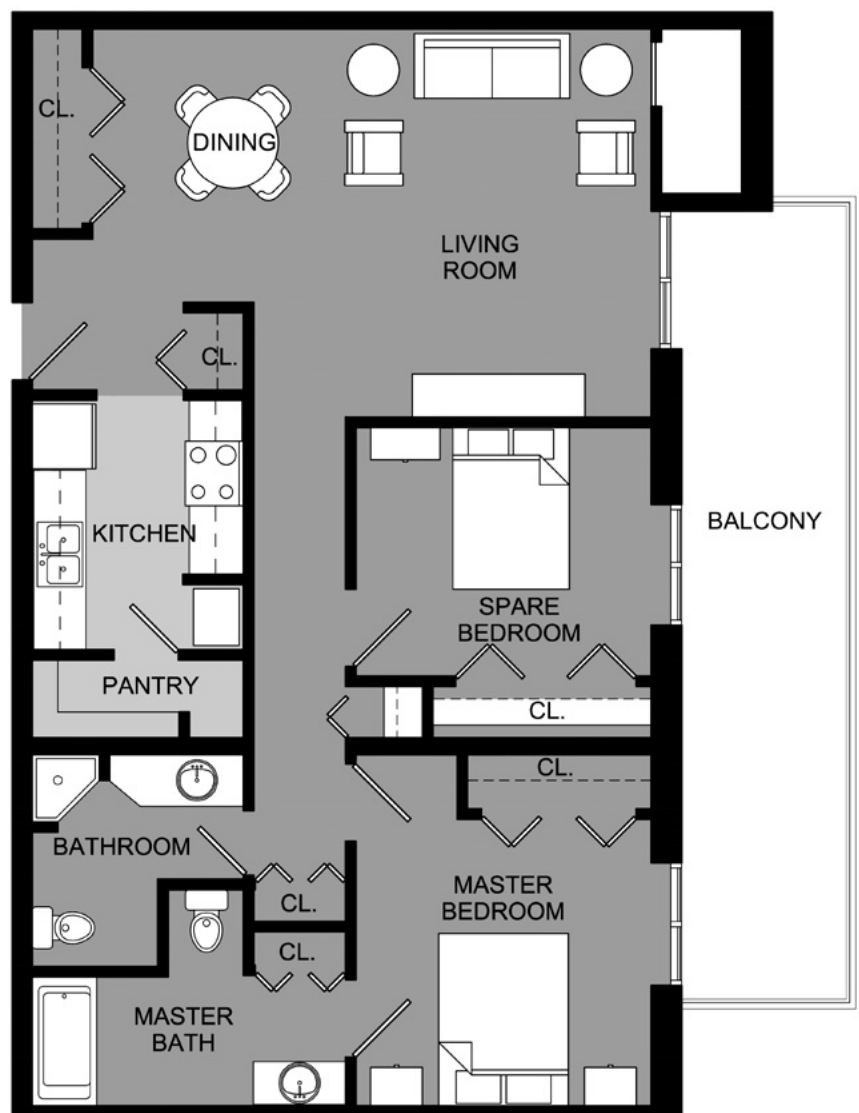
Zarrow Pointe is an engaging senior-living community rooted in lifelong learning. Our partnerships with physicians and universities bring healthy living to you with on-site services and educational opportunities.

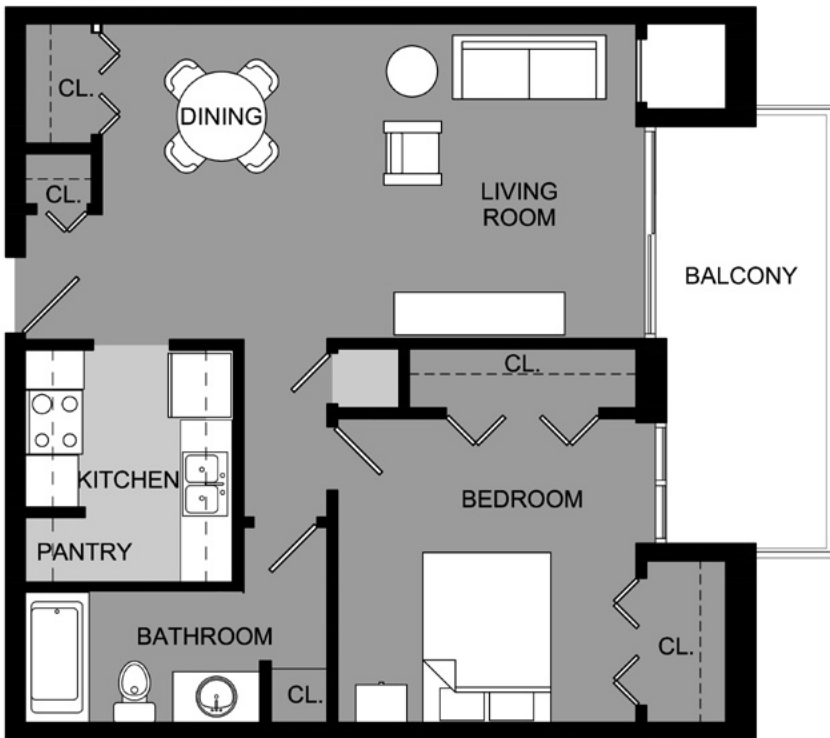
The Apartments offer spacious living options with the ability to increase services without having to move. We are one of the only facilities licensed to offer this continuum of care in Oklahoma.

## Comfort & Convenience

- Expanded Basic Cable
- All Kitchen Appliances Furnished
- 24-Hour Emergency Response System
- Open Living & Dining Room
- Private Balcony/Patio
- Abundant Closet Space
- Sprinkler Systems & Smoke Detectors
- Washer/Dryer Hook-ups
- Small Pets Welcome

Two-Bedroom Apartment  
APPROXIMATELY 1,100 SQ. FT.





One-Bedroom Apartment  
APPROXIMATELY 800 SQ. FT.

## Rates

### Deposits & Fees

One-Bedroom \$40,000

Two-Bedroom \$50,000

Deposit \$1,000

Pet Deposit \$1,000 per pet (non-refundable)

### Rent

One-Bedroom Rent \$2,840 per month

Two-Bedroom Rent \$3,880 per month

Additional Resident \$525 per month

### Assisted Living Services (monthly in addition to rent)

Level 1 \$2,855

Level 2 \$3,360

Level 3 \$3,845

## Discover More

|                                                                               | Independent Living | Assisted Living |
|-------------------------------------------------------------------------------|--------------------|-----------------|
| <b>Meals</b>                                                                  |                    |                 |
| Monthly Meal Allowance                                                        | ✓                  |                 |
| 3 Meals Daily                                                                 |                    | ✓               |
| <b>Housekeeping</b>                                                           |                    |                 |
| Weekly Flat Linen Service                                                     | ✓                  | ✓               |
| Personal Laundry                                                              |                    | ✓               |
| Weekly Housekeeping                                                           | ✓                  | ✓               |
| <b>Community</b>                                                              |                    |                 |
| Health & Wellness Programs                                                    | ✓                  | ✓               |
| Transportation to Planned Outings, Appointments & Grocery Store               | ✓                  | ✓ *             |
| Access to All Facilities, Programming & Health Providers on the Zarrow campus | ✓                  | ✓ *             |
| <b>Health Services</b>                                                        |                    |                 |
| Customized Nursing Service                                                    |                    | ✓               |
| Medication Administration & Monitoring                                        |                    | ✓               |
| <b>Utilities</b>                                                              |                    |                 |
| Utilities Included (Except Telephone & Internet)                              |                    | ✓               |

\*Some restrictions apply.



## Lifelong Learning.

Zarrow Pointe is a legacy of Tulsa Jewish. It's an inviting community that inspires lifelong learning and welcomes active seniors of all faith traditions.