



ZARROW POINTE

A Legacy of Tulsa Jewish

The Villas

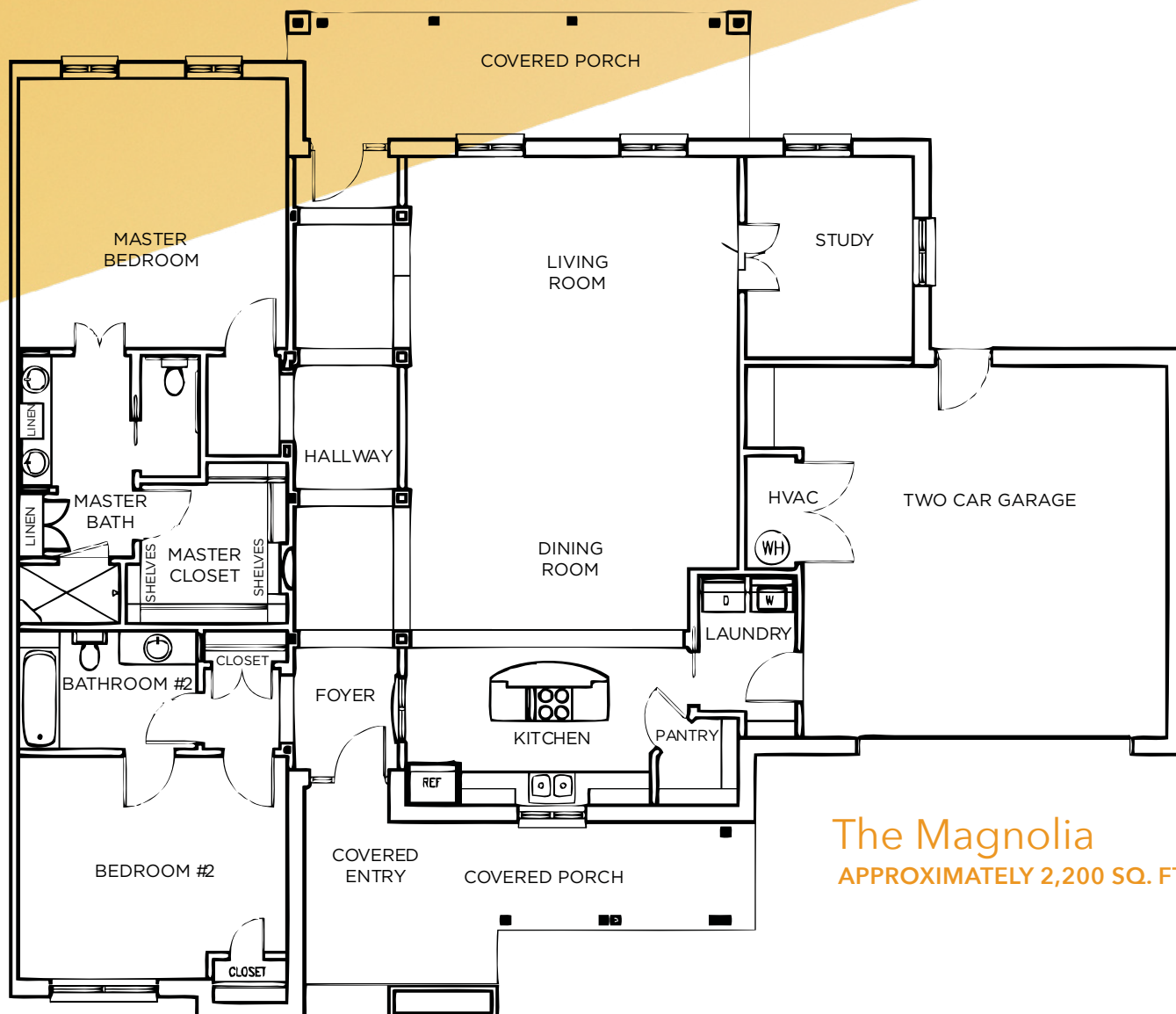


Independent Living in a Community Setting

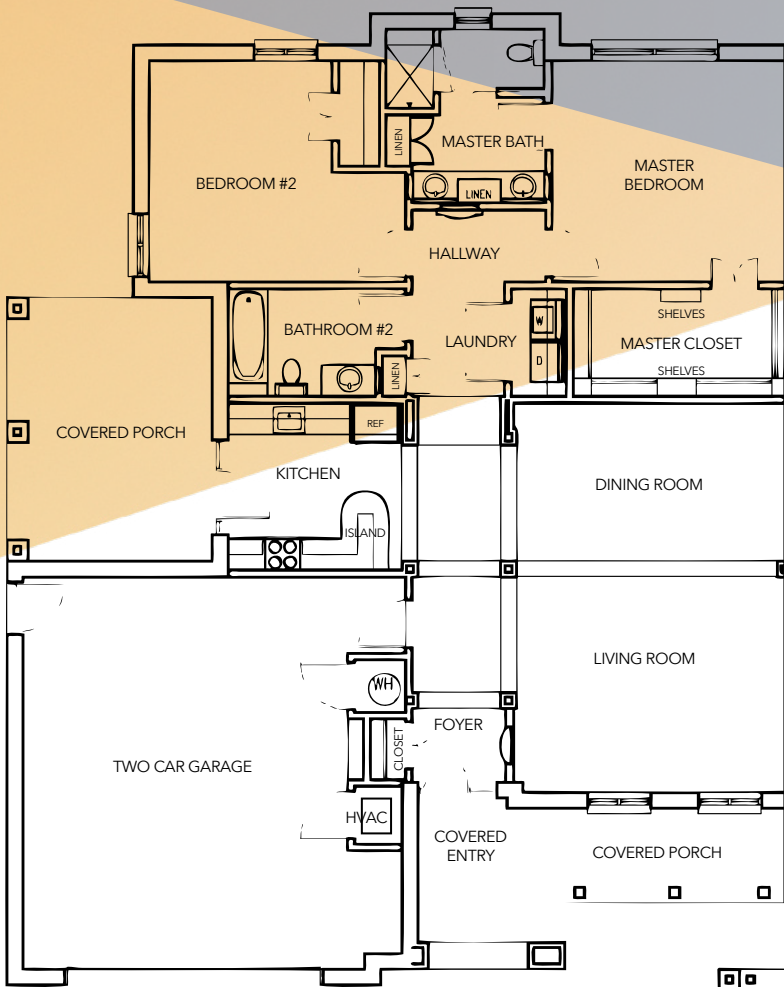
Zarrow Pointe is an engaging senior-living community rooted in lifelong learning. The Villas offer a vibrant campus life with the privacy of your own patio home. The spacious interiors are both luxurious and comfortable.

Discover More

- Private Gated Entry
- Abundant Closet Space
- Monthly Meal Allowance
- Weekly Housekeeping & Flat Linen Service
- Routine Home Maintenance
- Weekly Lawn Care
- Health & Wellness Programs
- Transportation to Planned Outings, Appointments & Grocery Store
- Access to All Facilities, Programming & Health Providers on the Zarrow campus
- Small Pets Welcome

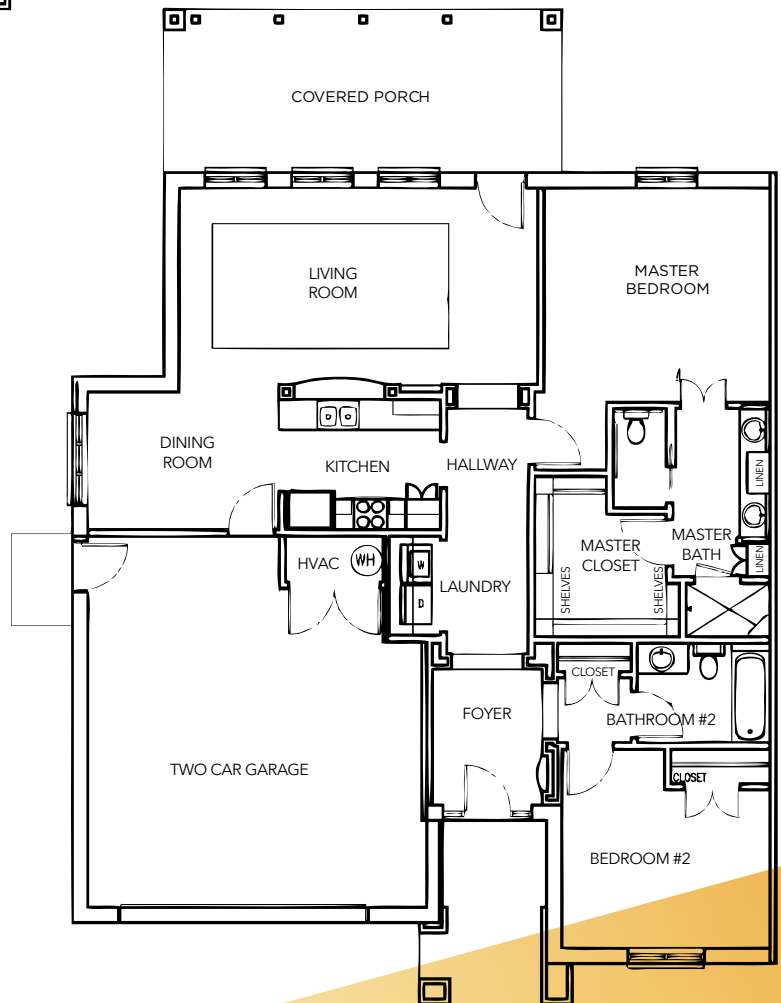


The Magnolia
APPROXIMATELY 2,200 SQ. FT.



The Dogwood
 APPROXIMATELY 1,700 SQ. FT.

The Redbud
 APPROXIMATELY 1,600 SQ. FT.



Lifelong Learning.

Zarrow Pointe is a legacy of Tulsa Jewish. It's an inviting community that inspires lifelong learning and welcomes active seniors of all faith traditions.

Rates

Entrance Fee	\$60,000
2 nd Person Entrance Fee	(no additional fee)
The Redbud	\$4,905 per month
The Dogwood	\$5,250 per month
The Magnolia	\$6,025 per month
2 nd Person	\$525 per month
Pet Deposit	\$1,000 per pet (non-refundable)

