



ZARROW POINTE

A Legacy of Tulsa Jewish

The Apartments



Independent or Assisted Living Tailored to Your Needs

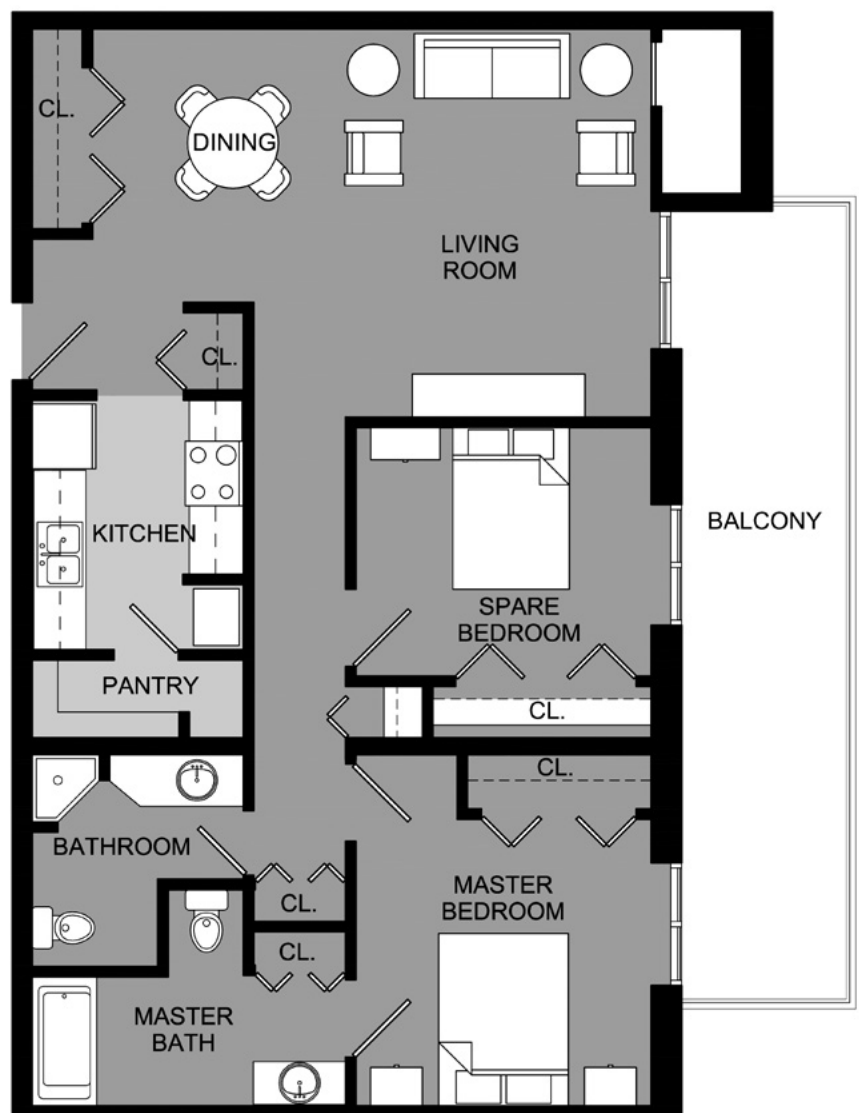
Zarrow Pointe is an engaging senior-living community rooted in lifelong learning. Our partnerships with physicians and universities bring healthy living to you with on-site services and educational opportunities.

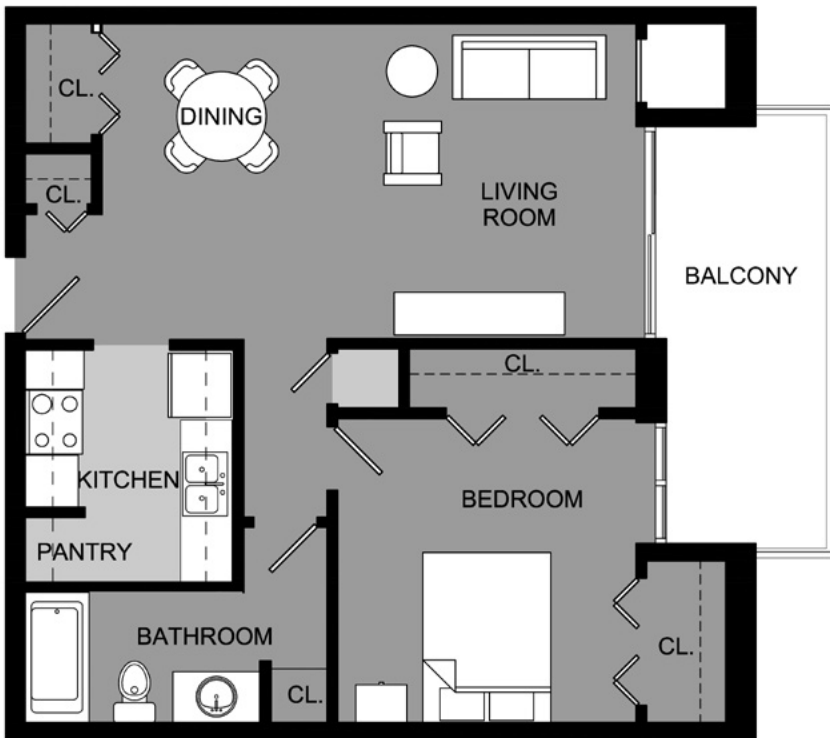
The Apartments offer spacious living options with the ability to increase services without having to move. We are one of the only facilities licensed to offer this continuum of care in Oklahoma.

Comfort & Convenience

- Expanded Basic Cable
- All Kitchen Appliances Furnished
- 24-Hour Emergency Response System
- Open Living & Dining Room
- Private Balcony/Patio
- Abundant Closet Space
- Sprinkler Systems & Smoke Detectors
- Washer/Dryer Hook-ups
- Small Pets Welcome

Two-Bedroom Apartment
APPROXIMATELY 1,100 SQ. FT.





One-Bedroom Apartment
APPROXIMATELY 800 SQ. FT.

Rates

Deposits & Fees

One-Bedroom \$40,000

Two-Bedroom \$50,000

Deposit \$1,000

Pet Deposit \$1,000 per pet (non-refundable)

Rent

One-Bedroom Rent \$3,100 per month

Two-Bedroom Rent \$4,235 per month

Additional Resident \$570 per month
(monthly in addition to rent)

Assisted Living Services

Level 1 \$3,115

Level 2 \$3,675

Level 3 \$4,195

Discover More

	Independent Living	Assisted Living
Meals		
Monthly Meal Allowance	✓	
3 Meals Daily		✓
Housekeeping		
Weekly Flat Linen Service	✓	✓
Personal Laundry		✓
Weekly Housekeeping	✓	✓
Community		
Health & Wellness Programs	✓	✓
Transportation to Planned Outings, Appointments & Grocery Store	✓	✓ *
Access to All Facilities, Programming & Health Providers on the Zarrow campus	✓	✓ *
Health Services		
Customized Nursing Service		✓
Medication Administration & Monitoring		✓
Utilities		
Utilities Included (Except Telephone & Internet)		✓

*Some restrictions apply.



Lifelong Learning.

Zarrow Pointe is a legacy of Tulsa Jewish. It's an inviting community that inspires lifelong learning and welcomes active seniors of all faith traditions.